

EMPOWER YOUR COMBUSTION ANALYSIS

NEXIS

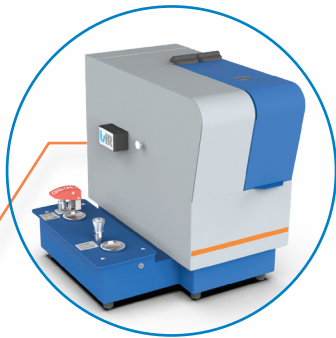
TOTAL NITROGEN / SULFUR / CHLORINE ANALYSIS
WITH UNSURPASSED PRECISION AND ACCURACY

METHODS COMPLIANT

Complies with international standards like ASTM, ISO, EN, IP, UOP, GB/T, SH/T, JISK, GOS

NEXIS GM

NEXIS GM module for safe and trouble free Gas/LPG analysis



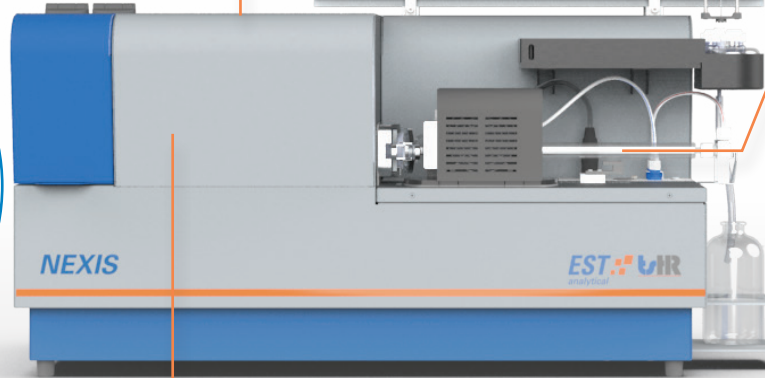
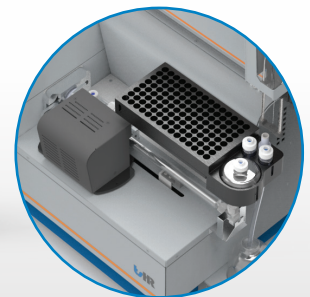
AUTOSAMPLER AS120

AS120 liquids and solid sampler to handle small and large sample volumes up to 250uL



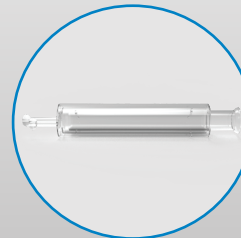
LIQUID COOLED BOAT

Faster run times with a high efficient liquid cooled boat module for handling low and high boilers



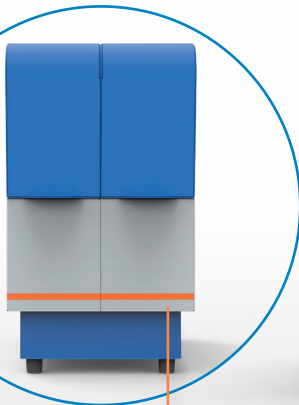
NEX-Z™

Unique design NEX-Z™ combustion tube for cleaner and more efficient combustion and full application coverage



TX MODULE

Add-on TX module for accurate Total Chlorine data with ease-of-use handling



NEXIS APPLICATIONS

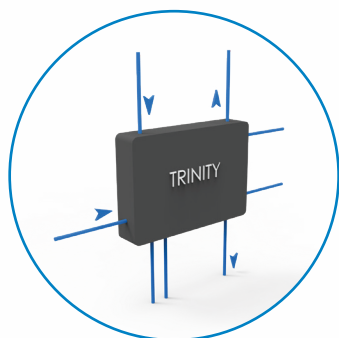
Diesel / Gasoline	Biodiesel	Lubricants	Polymers
High-grade chemicals	LPG & Gas	Coal	HVGO

EST & **btHR**
analytical

NEXIS VP

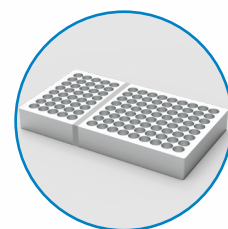
TRINITY™

TRINITY™ module for unbiased Total Sulfur data and in full compliance with latest ASTM D5453 method



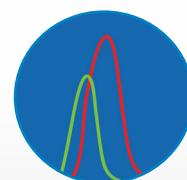
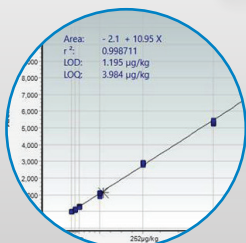
COOLED AND HEATED TRAY

Heated sample tray with maximum temperature of 80°C and powerful cooled tray capabilities down to 15°C



ONE-CAL™

ONE-Cal™ Technology for liquids and LPG/Gas calibration using ONE standard



NEXIS LINK

NEXIS LINK software with DSP Technology™ to achieve ultra low detection limits < 5 ppb

NEX-Z™

Vertical NEX-Z™ combustion tube without use of consumables



NEXIS VP APPLICATIONS

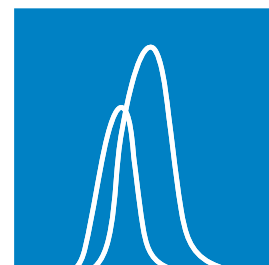
Diesel / Gasoline	Biodiesel	VGO	Pentane
High-grade chemicals	LPG & Gas	Aromatics	Renewable liquids

CONTACT INFO

E-mail: sales.tshr@estanalytical.com
 E-mail (US only): sales@estanalytical.com
 Our website: www.estanalytical.com



Visit our website to find your local TSHR distributor



150.ORG.NX.V1.0