

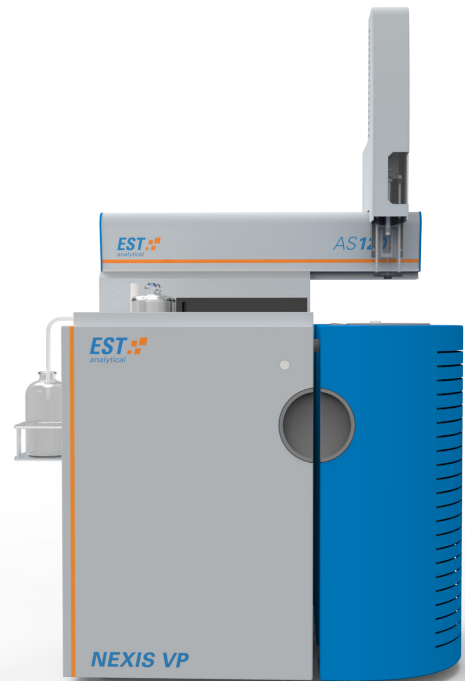
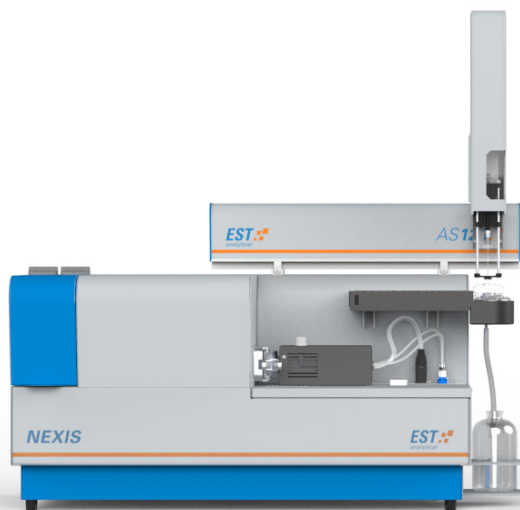
# ACCESSORIES GUIDE

analyzer

# NEXIS

Accessory	NEXIS	NEXIS VP
AS120 Liquids Autosampler	●	●
<i>Heated tray</i>	●	●
<i>Cooled tray</i>		●
AS120 Solids Autosampler	●	
Cooled Liquids Boat Module	●	
NEXIS AI (Auto Injector)		●
NEXIS GM Gas & LPG sampler	●	●

The EST NEXIS product platform is the most advanced Combustion Analyzer solution for measuring accurate trace and high level concentrations of sulfur, nitrogen and chlorine in a large variety of organic liquid, solids and gas/LPG samples. For the analysis of these samples, the NEXIS has a number of special sample introduction modules and techniques to secure accurate and repeatable analytical performance. All accessories are NEXIS LINK software controlled.

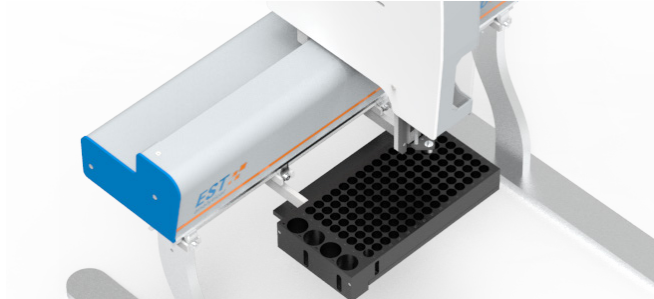


# EST

analytical

## AS120 LIQUIDS AUTOSAMPLER

Provides fully automatic analysis of liquid samples on the NEXIS series, the 120 vial positions sample tray facilitates small and high sample throughput. The AS120 will improve your productivity and make use of ONE-Cal™ Technology to prepare a calibration curve based on ONE single standard. The AS120 can be configured with Heated tray and Cooled tray capabilities to enhance your application performance.



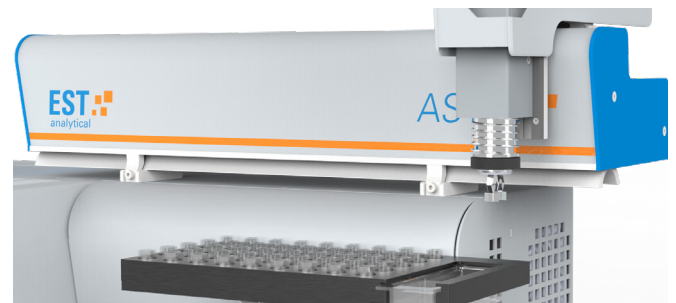
### KEY BENEFITS

- High capacity and fast sampling;
- ONE-Cal™ Technology to enhance the calibration performance;
- Cooled tray with extreme fast temperature ramping profile down to 16°C;
- Heated tray with customer temperature setting upto 80°C to optimize your application needs.



## AS120 SOLIDS AUTOSAMPLER

In seconds you can convert your AS120 liquid autosampler into a solids autosampler that includes a 45 position sample tray to analyze nitrogen, sulfur or chlorine in your solids samples. Or you can choose to have dedicated solids autosampler capability on the NEXIS to maximize your productivity.

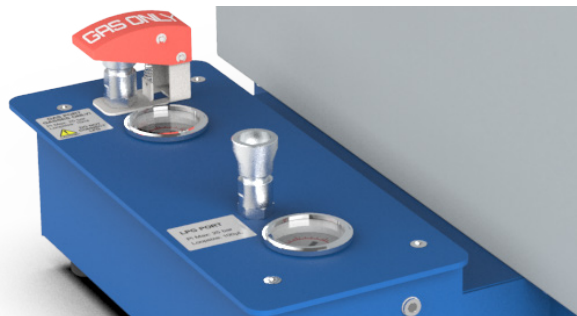


### KEY BENEFITS

- Fully software controlled operation;
- After analysis of the sample the quartz sample cups will be collected into a waste container for easy cleaning;
- Fast and easy operation with accurate sample pick-up and positioning by gripper design.

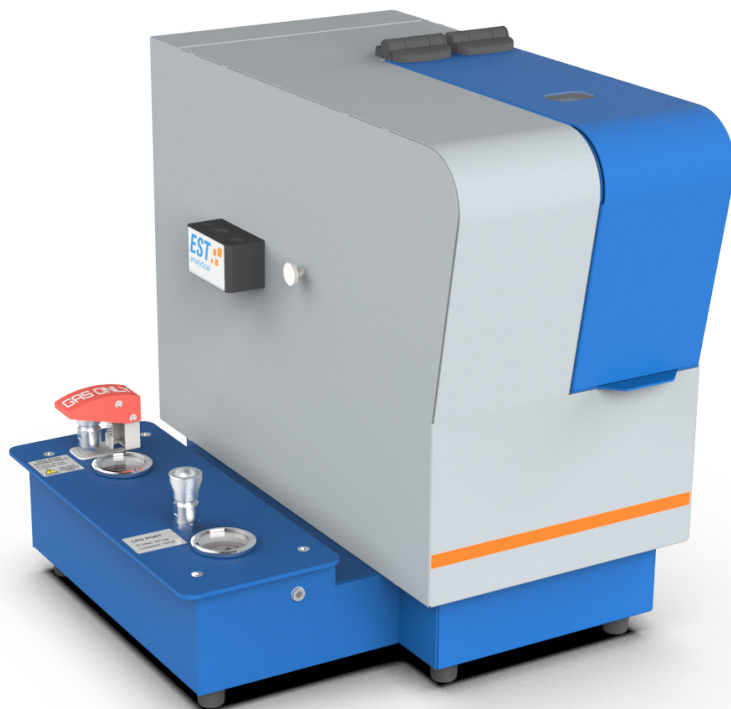
## NEXIS GM

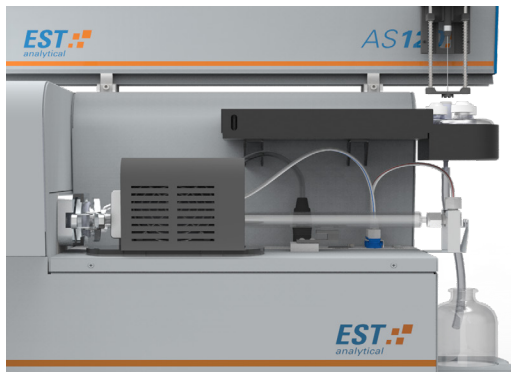
Hydrocarbon gasses and LPG samples are extremely flammable and therefore the need for a safe and reliable sampling device is of paramount importance. The NEXIS GM includes hardware features such as hydrocarbon and pressure sensors and sampling valves to ensure a safe operation. The NEXIS GM is available in various configurations to meet lab requirements with handling low and high pressure gas & LPG samples.



### KEY BENEFITS

- Sulfinert coating tubing lines for reliable gas sampling;
- High pressure solutions available for handling LPG upto 700 psi (40 bar) and gas samples upto 2500 psi (170 bar);
- Fully NEXIS LINK software control and operation;
- Calibration points and replicates in one run based on one single standard.



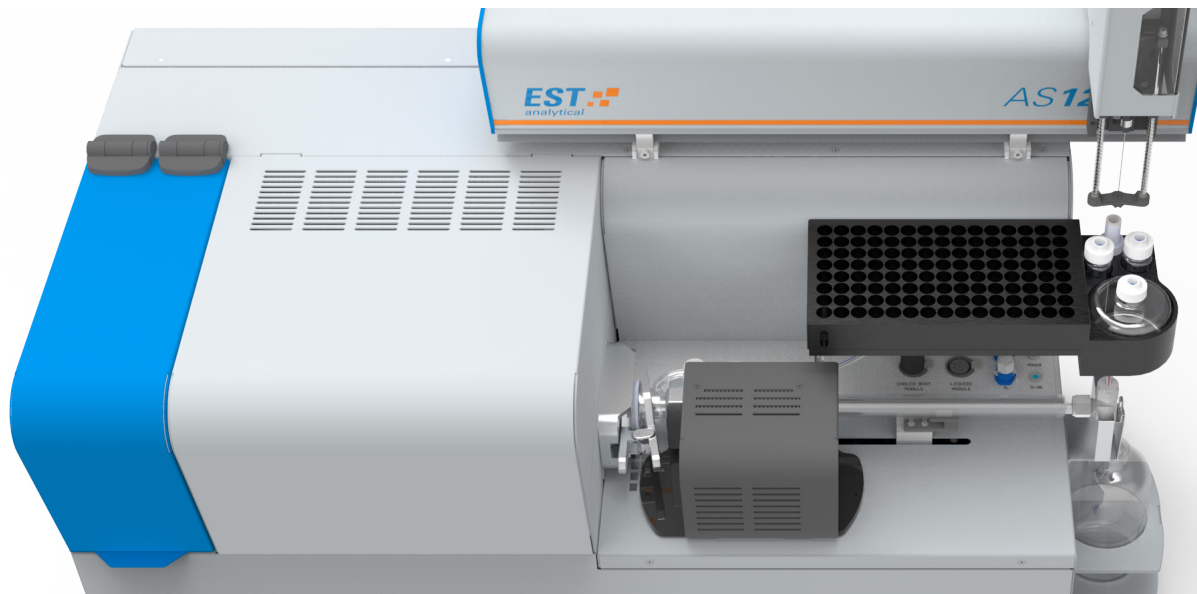


### COOLED LIQUIDS BOAT MODULE

Analysis of light and heavy liquid hydrocarbons by boat introduction on a NEXIS results in shorter analysis times of less than 6 minutes. This peltier boat cooling design enables labs to have maximum analyzer uptime and reporting fast accurate and reliable sulfur, nitrogen and chlorine data.

#### KEY BENEFITS

- Obtain fast and accurate sample data;
- Ease of use and effective peltier cooling.

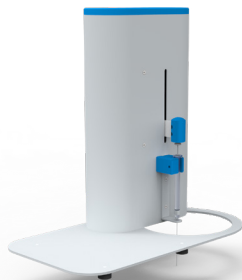


### NEXIS AI

The single liquid syringe injector enables customers to inject semi-automatic liquid samples through the NEXIS VP analyzer. The NEXIS AI facilitate microliter syringes from 10 to 250 ul and the NEXIS LINK software controls the injection speed and sample analysis.

#### KEY BENEFITS

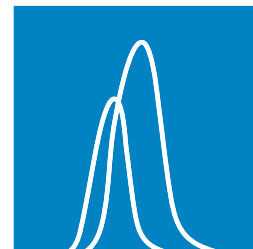
- Ease-of-use and software controlled operation
- Most suitable when analysis limited of samples per day



### CONTACT INFO

E-mail: [nexis@estanalytical.com](mailto:nexis@estanalytical.com)

EST website: [www.estanalytical.com](http://www.estanalytical.com)



000.EST/AG.NX1.1