

EVOLUTION²

PURGE & TRAP CONCENTRATOR

The most reliable VOC
concentrator on the market
today



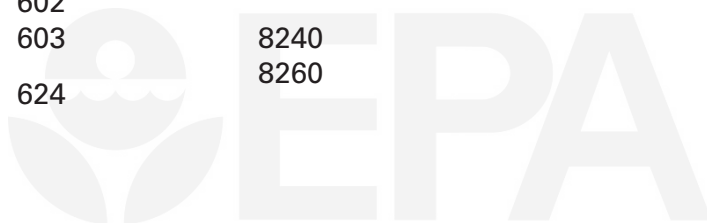
Key Features

- Superior moisture control (patented feature)
- Low carryover (patented feature)
- Easy maintenance & diagnostics
- Best in-class service & support
- 3 year warranty on electronic boards

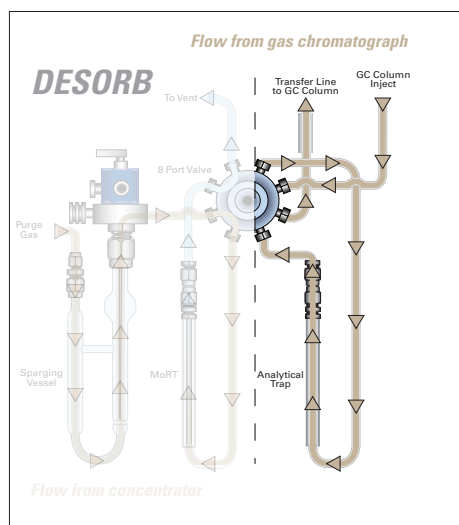
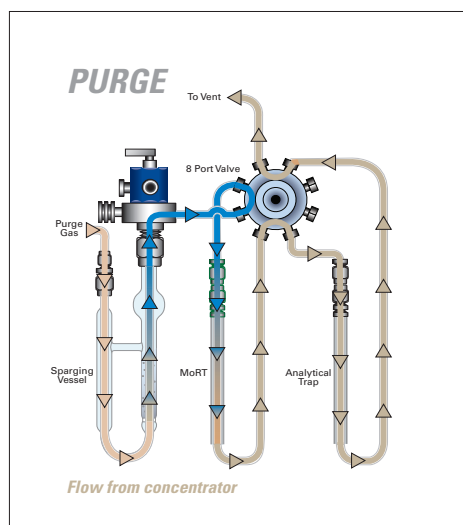
Methods

502.1	5030
502.2	5035
524.2	8010
524.3	8015
524.4	8020
	8021
601	8030
602	
603	8240
624	8260

EST 
analytical *Rely On Us* 



Water Management

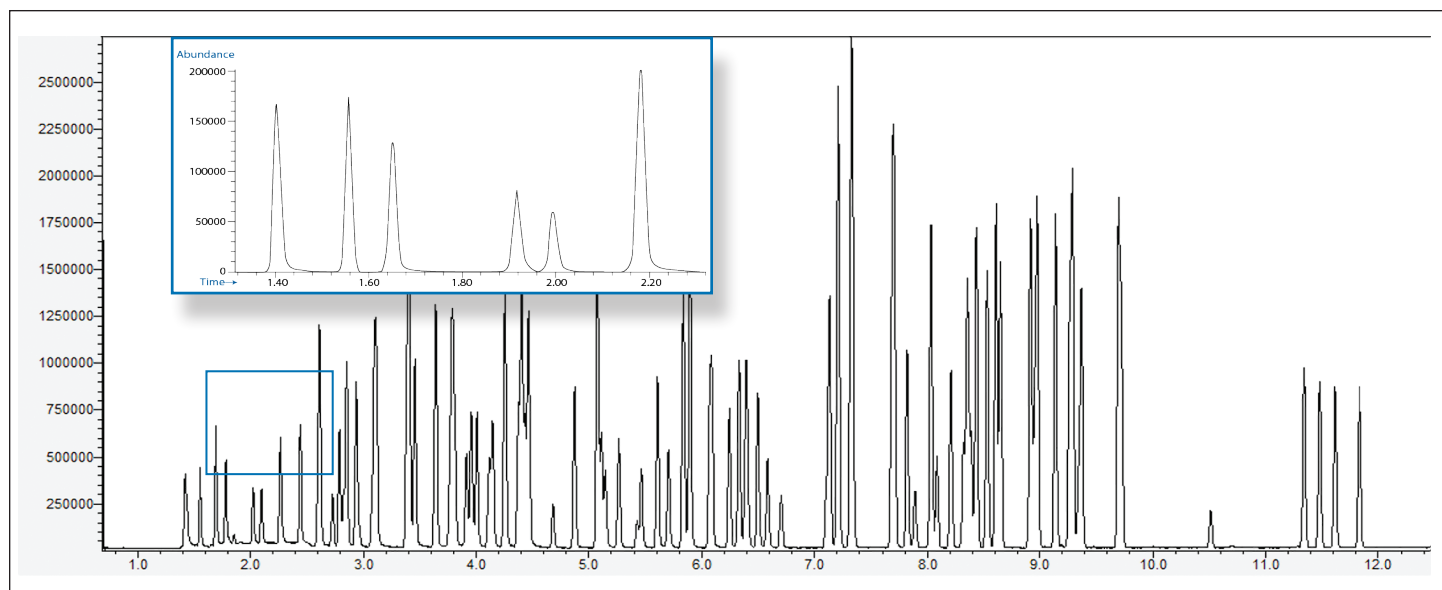


- The Evolution is designed to remove water during the purge process.
- By using an 8-port valve instead of a 6-port valve, the sample during desorption goes directly to the GC.



Water Management System

Superior Chromatography



50 ppb EPA Method 8260. Front end gases showing improved resolution are highlighted.

Reduced Carryover

The **eliminator**[®]

The **eliminator** is EST analytical's patented sparge heater that bakes the glassware of the Evolution concentrator between sample runs.



Visit
estanalytical.com

EST  **Rely On Us**
analytical