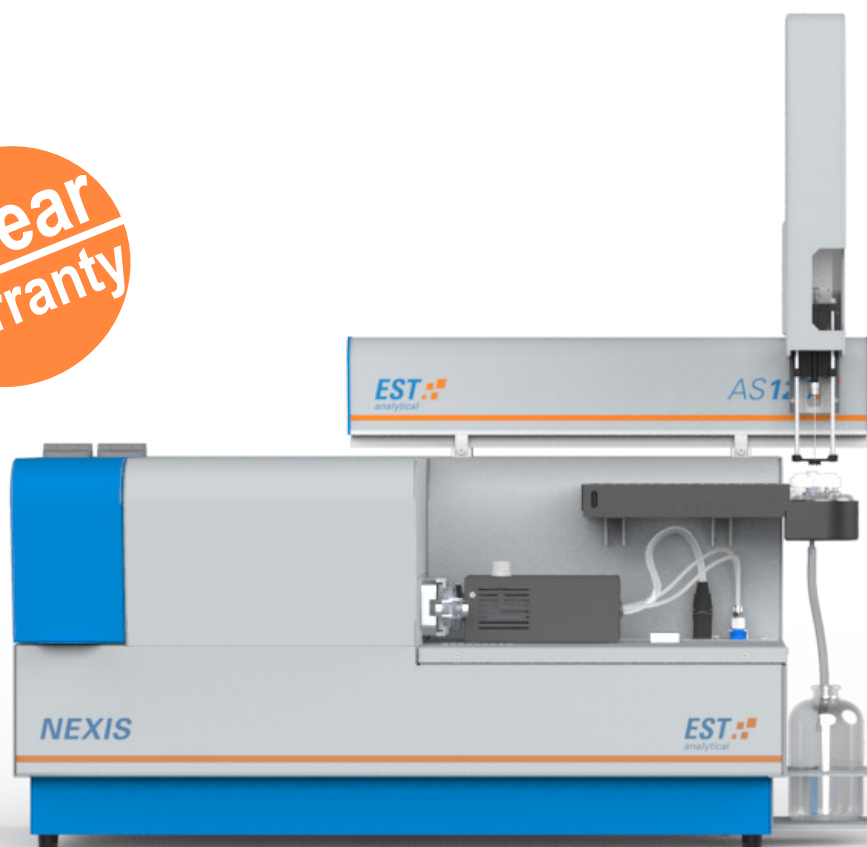


NEXIS TN-TS-TX ANALYZER

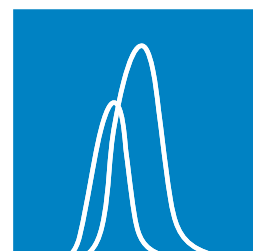
EST 
analytical

ALL IN ONE TOTAL NITROGEN | SULFUR | CHLORINE
ANALYZER WITH UNSURPASSED PERFORMANCE

2 Year
Warranty



- Fast, precise and accurate simultaneous TN/TS analysis under 20 ppb
- Unique design NEX-Z™ combustion tube without consumables costs
- AS120 Liquids/Solids autosampler with ONE-Cal™ Technology
- Ease-of-use with user interface NEXIS LINK™ software operation



ACCURACY AND RELIABILITY YOU CAN COUNT ON

The EST Total Nitrogen/Sulfur/Chlorine Analyzer, model NEXIS, is a horizontal oriented combustion analyzer with highest modularity and advanced detectors to measure trace level nitrogen/sulfur/chlorine concentrations in a wide range of liquids, solids and LPG / Gas sample types. The NEXIS TN/TS analyzer configuration detects these substances through a uniquely high effective NEX-Z™ combustion tube design that includes Ultra Violet Fluorescence (UV-F) and Chemiluminescence (CLD) detection techniques, while Total Chlorine is detected by micro coulometry (MCT) with an add-on module. The NEXIS is manufactured to the highest level of ISO quality standards ensuring precision, accuracy and longevity.

Customers in refineries, petrochemical plants, commercial testing labs and Research & Development Centers will benefit from the NEXIS combustion analyzer. The ease-of-use operation, enhanced application versatility and reliability, deliver precise and accurate sulfur/nitrogen/chlorine analysis data. This makes the NEXIS an excellent product solution for their analysis needs, such as monitoring and protecting key refinery processes.



The NEXIS is designed to facilitate high sample throughput by optional addition of the AS120 liquid autosampler that will support both syringe and boat introduction methods with high performance and reliability. This solution provides a fully automated trace level combustion analyzer, which can be extended with heated sample tray capability. For Gas and LPG samples the NEXIS TN/TS/TX analyzer can be connected to a NEXIS GM module to facilitate this kind of samples with fast connectivity and ease-of-use operation through NEXIS LINK software.

The NEXIS Combustion analyzer fulfil a wide range of customers application demands and fully complies with international ASTM, ISO, DIN, EN and UOP regulatory methods.



KEY ADVANTAGES

- High performance UV-F and CLD detectors with LOD's down to ppb level
- Accurate, Fast and Reliable Total Nitrogen/Sulfur/Chlorine Data
- Unique NEX-Z™ furnace tube design for long lasting and effective combustion
- Regulatory compliance to international standards (ASTM, ISO, UOP, DIN)
- Extensive Application range with enhanced flexibility for analysis of Liquids, Solids and Gasses / LPG
- Optional AS120 Liquid autosampler with heated tray capabilities for high sample throughput
- High efficiency boat cooling option for handling challenging sample matrices

PRODUCTIVITY YOU NEED

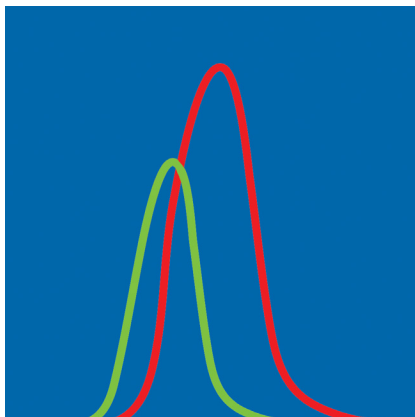
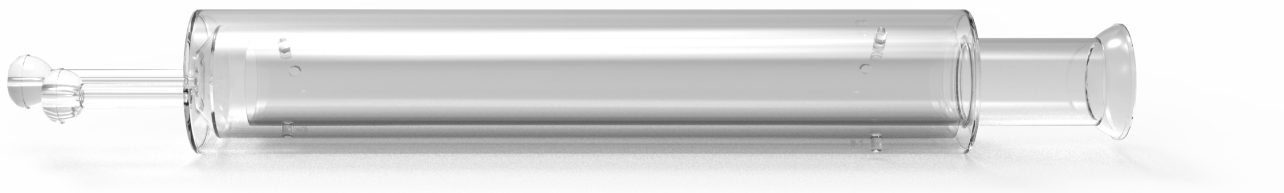
AS120: RELIABLE XYZ-SAMPLER FOR BOTH LIQUIDS AND SOLIDS

The AS120 model autosampler can be configured to handle liquid samples and can also be converted into a fully-fledged solids autosampler to analyze e.g. catalysts and polymers by the NEXIS analyzer. The position of the sampler has no impact on laboratory bench space and has enhanced sampling capabilities with heated tray capability for handling high viscous samples. The AS120 liquids configuration can even make out of one (stock)standard a full calibration line fully automatic with high precision and accuracy. The AS120 is manufactured by EST and is fully compatible with the NEXIS. There is no 3rd party OEM involvement so you can feel confident in its capability and the support behind it.



KEY ADVANTAGES

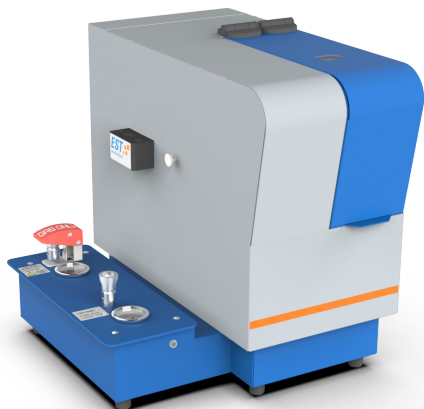
- Requires only ONE single liquid standard to prepare customized calibration lines
- Compatible with syringes from 25 to 250 uL
- Convert liquids into a solids application configuration within a minute
- Not an OEM resulting in faster and comprehensive support



TRINITY™: POWERFUL TUNABLE SOLUTION FOR REPORTING UNBIASED SULFUR DATA

In order to have interference free Total Sulfur analysis consistent with ASTM D5453-19a, the NEXIS offers a unique software controlled and integrated customer solution in the TS and TN/TS analyzer configurations.

The use of the sophisticated NO_x Elimination design, TRINITY™ module, enables users to adjust the power level to save operational costs while achieving most effective elimination of Nitrogen Oxide and finally reporting accurate and none-biased Total Sulfur data in their samples.

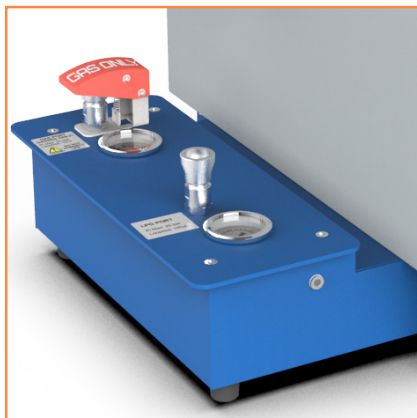


NEXIS GM: AUTOMATIC AND SAFE GAS/LPG SAMPLING

The NEXIS GM is available with built-in safety features to give your lab confidence. It is available in three different configurations and designed to handle pressurized LPG /Gasses and/or non-pressurized gas samples (e.g.Tedlar bags) in a single gas sampling device. The NEXIS GM module is fully software controlled to load and inject a pressurized Gas / LPG sample through a sample loop design that is fully automatic into the NEXIS analyzer.

KEY ADVANTAGES

- Calibration line based on only ONE single Gas / LPG or liquid standard
- Compact design with controlled NEXIS LINK software operation
- Safety sensor to ensure safe sample handling

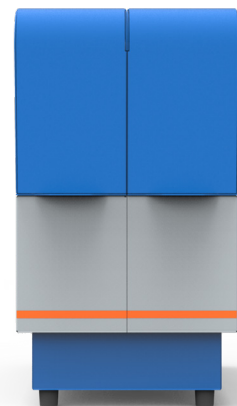


PELTIER COOLED BOAT CONFIGURATION FOR REDUCED SAMPLE RUN TIMES

Faster analysis times can be achieved with use of a temperature controlled peltier cooled boat module to analyze light and heavy liquid hydrocarbons. This is an advantage for users with a wide range of liquid samples to operate more productively and minimize analyzer down-time

TX ANALYSIS: MOST COMPACT AND EASE-OF-USE

The optional addition of a Total Chlorine module or having a NEXIS dedicated TX analyzer configuration makes the NEXIS model a most versatile combustion elemental analysis solution. For chlorine analysis, the NEXIS operates using a user-friendly, safe and compact micro coulometric titration module.



NEXIS HAS YOUR APPLICATIONS COVERED

The compact and modular NEXIS analyzer is available in more than 8 different analyzer configurations with no impact on the bench space. The analyzer is designed to run trace level analysis within a few minutes and meet all types of customer application requirements.



MARKET APPLICATIONS AT A GLANCE

Market Application	Total Sulfur	Total Nitrogen	Total Chlorine
Fuels (Diesel, Gasoline, Kerosene)	●		
Light and Heavy Liquid Hydrocarbons	●	●	
LPG & Gaseous Hydrocarbons	●	●	●
Natural Gas	●		
Condensates and Distillates	●	●	●
Lubricating Oils		●	
VGO's		●	
Aromatic Hydrocarbons	●	●	
High-grade chemicals	●	●	
Crude Oil			●
Biodiesel	●		
Ethanol	●		
Renewable liquids	●	●	●
UCOME & Fatty Acids	●	●	
Palm Oil			●
Polymers (PE, PP)		●	
Additives		●	

Heater status

	Setpoint	Actual
Furnace 1	1000	995 °C
Furnace 2	1000	995 °C
Inlet	500	495 °C
NOx Converter	320	315 °C

Flow status

	Setpoint	Actual
Cajibrate	100	95 ml/min
Argon/Helium	300	295 ml/min
Oxygen (primary)	100	93 ml/min
Oxygen (ozoneator)	100	95 ml/min

PMT settings

	Setpoint	
TN PMT	0	V
TSUV PMT	700	V

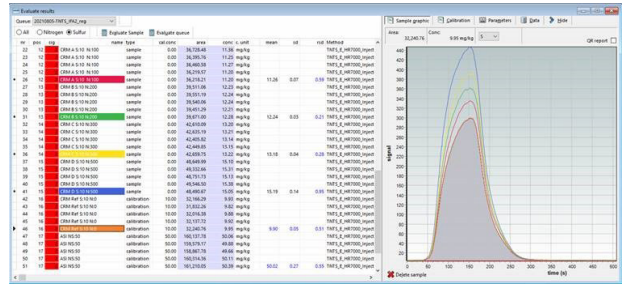
Tray settings

	Setpoint	Actual
Cooling		0 °C

NEXIS LINK SOFTWARE WITH DSP TECHNOLOGY™ : INTUITIVE FULL ANALYZER CONTROL WITH ULTRA LOW DETECTION LEVELS

The comprehensive and easy to use NEXIS LINK software supports the operation, full instrument and sampler parameters control and data handling of the NEXIS Combustion Elemental Analyzer. A user-friendly diagnostics and clear icons design allow simple analyzer operation at a glance.

System status Queue manager One-Cal Evaluate results Method Queue editor



KEY ADVANTAGES

- Real time measurement curves with peak overlays
- Export data to LIMS using common file formats such as XML, CSV, Tab, XLSX
- TRINITY™, autosampler and Gas / LPG sampling operation and control
- Integrated calculation and calibration methods for analysis of Gas and Liquid samples
- Enhanced automatic ranging, calibration and analysis functionalities



EST SOLUTIONS FOR COMBUSTION ELEMENTAL ANALYSIS

NEXIS CONFIGURATION AND ORDERING INFORMATION

Analysis	NEXIS horizontal	Item No.	Voltage
Total Sulfur	●	C01010001	115V
Total Nitrogen	●	C01010002	115V
Total Sulfur / Nitrogen	●	C01010003	115V
Total Chlorine	●	C01010012	115V
Total Sulfur / Nitrogen / Chlorine*	●	C01010014	115V

* Not simultaneous

ABOUT EST

For over 30 years, EST has been manufacturing, selling, and servicing high quality ISO certified scientific and analytical instruments. We are privately held and have only one stock holder we are committed to, and that's our customers. Our solutions help our clients meet complex industry challenges by providing unparalleled quality instruments that deliver high performance, safe operation, and a low cost of ownership, all of which ensures the best overall value for laboratories around the world. Our headquarters are in Cincinnati, OH with locations in Rotterdam and Beijing.

At EST, the customer is boss, and that's why labs of all types have come to **Rely On Us**.

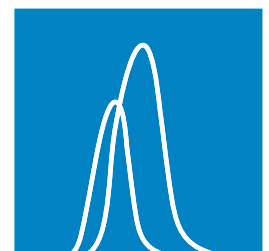
CONTACT INFO

E-mail: nexis@estanalytical.com

EST website: www.estanalytical.com



EST 
analytical



000.EST:BR.NX1.1